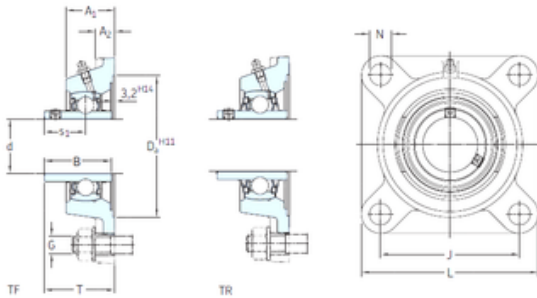




# BEARING-SINGAPORE (PTE)LTD.

## SKF FY 25 TR bearing units

Bearing No. FY 25 TR



FY 25 TR Bearing 2D drawings and 3D CAD models

Bore Diameter	25 mm
d	25 mm
Da	74,6 mm
s1	19,8 mm
A1	30 mm
B	34,1 mm
G	10 mm
J	70 mm
L	95 mm
N	11,5 mm
T	38,8 mm
A2	12 mm
Weight	0,77 Kg
Basic dynamic load rating (C)	14 kN
Basic static load rating (C0)	7,8 kN
Fatigue load limit (Pu)	0,335
Category	Bearings
Inventory	0.0
Manufacturer Name	SKF
Minimum Buy Quantity	N/A
Weight / Kilogram	0
Product Group	M06110
Housing material	Cast iron
D <sub>a</sub>	74.6 mm
D <sub>b1</sub>	65 mm
D <sub>b2</sub>	71 mm



## BEARING-SINGAPORE (PTE)LTD.

A	30 mm
A <sub>1</sub>	12 mm
A <sub>3</sub>	3.2 mm
A <sub>5</sub>	18 mm
s <sub>1</sub>	19.8 mm
R <sub>G</sub>	1/4-28 UNF
R <sub>1</sub>	21 mm
D <sub>N</sub>	6.5 mm
SW <sub>N</sub>	7 mm
G <sub>N</sub>	1/4-28 SAE-LT
J <sub>6</sub>	83 mm
J <sub>7</sub>	19 mm
N <sub>4</sub>	4 mm
Basic dynamic load rating C	14 kN
Basic static load rating C <sub>0</sub>	7.8 kN
Fatigue load limit P <sub>u</sub>	0.335 kN
Limiting speed	4300 r/min
Mass bearing unit	0.69 kg
Thread grub screw G <sub>2</sub>	M6x0.75
Hexagonal key size for grub screw N	3 mm
Recommended tightening torque for grub screw	4 N · m
Recommended diameter for attachment bolts, mm G	10 mm
Recommended diameter for attachment bolts, inch G	0.375 in
Housing	FY 505 M
Bearing	YAR 205-2RF
End cover	ECY 205